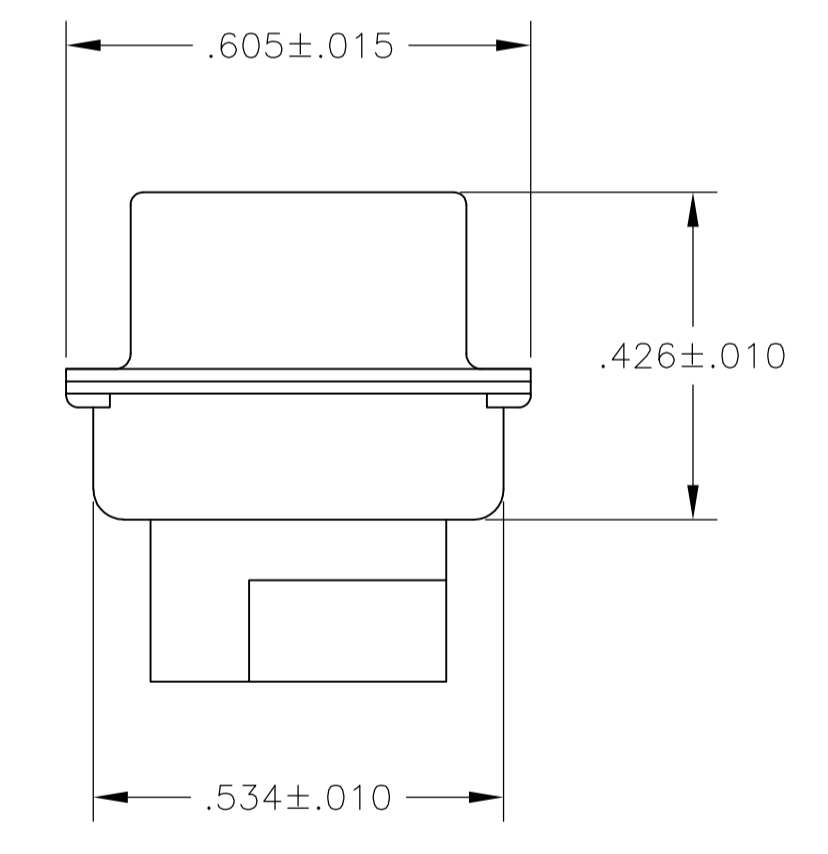
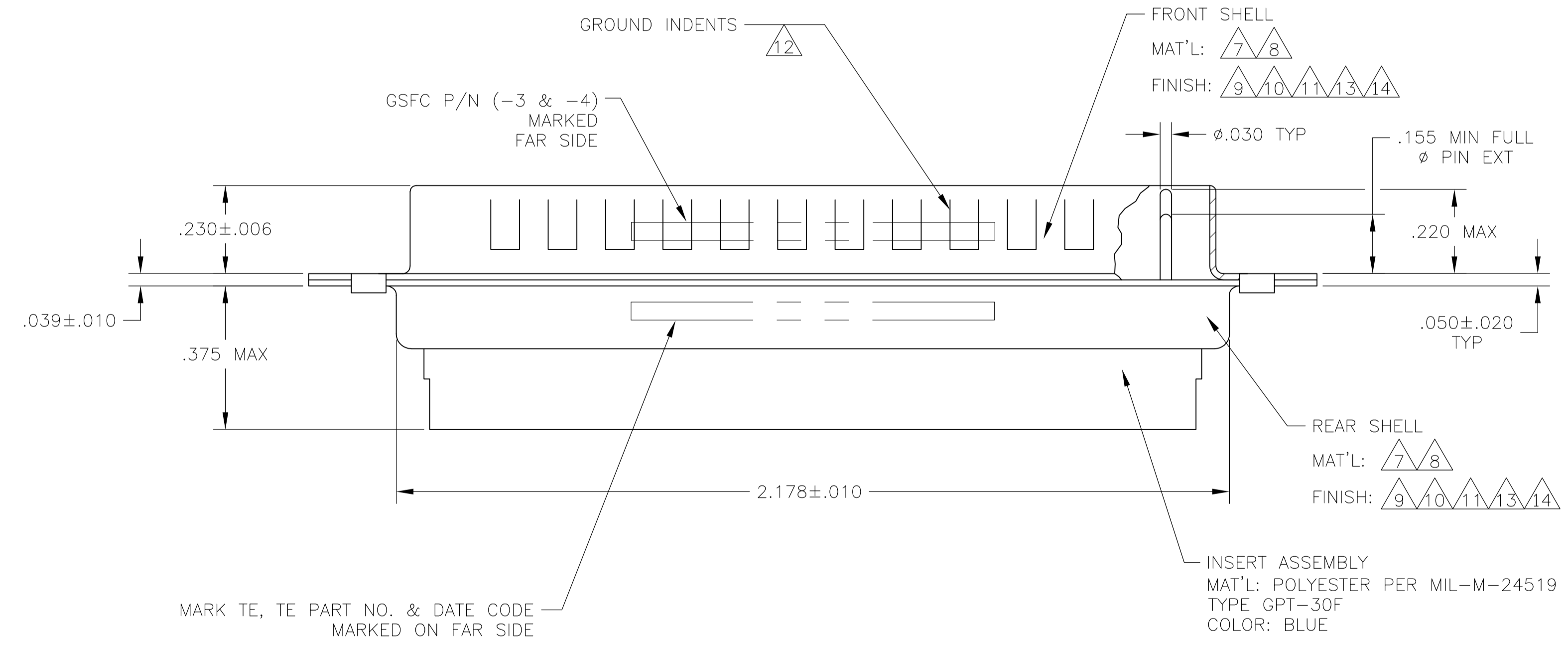
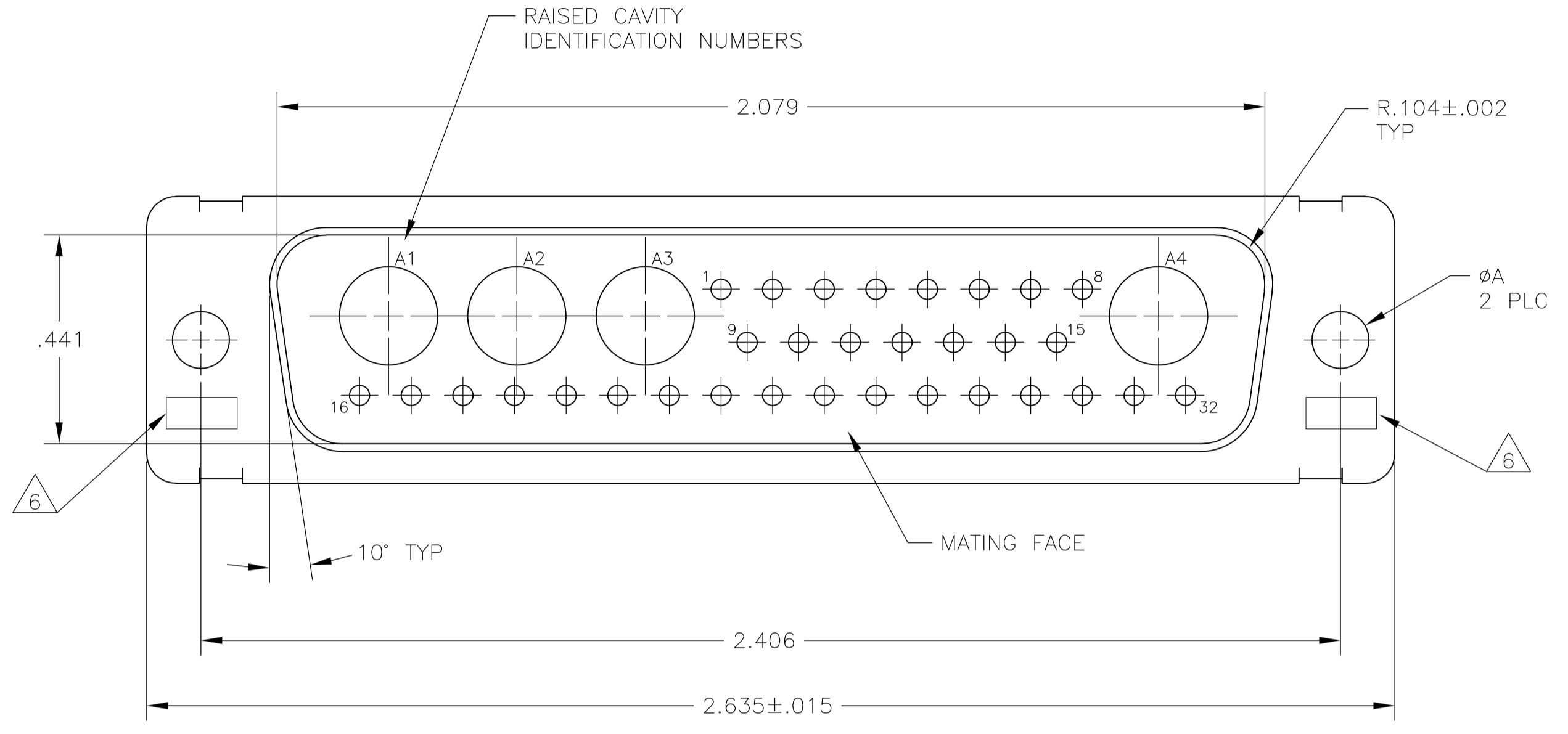


LOC	DIST	REVISIONS					
DF	DO	P	LTR	DESCRIPTION	DATE	DWN	APVD
		L		REVISED PER ECO-09-013277	13-04-09	CT	RL



- THIS PLUG WILL MATE WITH ANY 36C4, SIZE 5 RECEPTACLE IN AMPLIMITE SERIES.
 - MAXIMUM WIRE INSULATION TO BE USED WITH THIS PLUG IS $\phi.072$.
 - THIS CONNECTOR ACCEPTS (4) POWER 8, OR COAX PIN CONTACTS IN POSITIONS A1 THRU A4, PURCHASED SEPARATELY.
 - THIS CONNECTOR ACCEPTS SIZE 20 PIN SIGNAL CONTACTS IN POSITIONS 1 THRU 32, PURCHASED SEPARATELY.
 - INSERTION/EXTRACTION TOOL USED FOR SIZE 20 PIN SIGNAL CONTACTS IS 91067-2.
- $\triangle 6$ UL/CSA DESIGNATION STAMPED IN THIS AREA, OPTIONAL.
 $\triangle 7$ STEEL PER ASTM-A-109.
 $\triangle 8$ BRASS PER MIL-C-50 AND ASTM-B-36 UNS NO. C26000.
 $\triangle 9$ FINISH: CADMIUM PLATED PER QQ-P-416, TYPE II, CLASS 2.
 $\triangle 10$ FINISH: GOLD PLATED PER MIL-G-45204 TYPE II, GRADE C, CLASS 1 OVER COPPER PER MIL-C-14550, CLASS IV.
 $\triangle 11$ FINISH: TIN PER ASTM-B-545, .000200 MIN THK OVER COPPER PER AMS2418, .000100-.000200 THK.
 $\triangle 12$ GROUND INDENTS FOR 208744-5 & 5-208744-5 ONLY.
 $\triangle 13$ FINISH: TIN PER ASTM-B-545, .000200 MIN THK OVER COPPER PER AMS2418 .000100-.000200 THK.
 $\triangle 14$ FINISH: ZINC PLATE PER ASTM-B-633 .000200-.000400 THK WITH SUPPLEMENTARY CHROMATE (Cr3+).

$\triangle 7, \triangle 12, \triangle 13$.120	-	5-208744-5
$\triangle 7, \triangle 14$.154	-	5-208744-2
$\triangle 7, \triangle 14$.120	-	5-208744-1
$\triangle 7, \triangle 11, \triangle 12$.120	-	208744-5
$\triangle 8, \triangle 10$.154	311P405-23P-B-15	208744-4
$\triangle 8, \triangle 10$.120	311P405-23P-B-12	208744-3
$\triangle 7, \triangle 9$.154	-	208744-2
$\triangle 7, \triangle 9$.120	-	208744-1
REMARKS	ϕA	GSFC P/N	PART NO.

THIS DRAWING IS A CONTROLLED DOCUMENT.

DIMENSIONS: INCHES	TOLERANCES UNLESS OTHERWISE SPECIFIED:	0 PLC ± -	1 PLC ± -	2 PLC ± -	3 PLC ± .005(0.13)	4 PLC ± .005(0.13)	ANGLES ± 0°30'
--------------------	--	-----------	-----------	-----------	--------------------	--------------------	----------------

MATERIAL	FINISH	WEIGHT	SCALE	SHEET	REV
-	-	-	4:1	1 OF 1	1

TYPICAL DIMENSIONS: 0 PLC ± -, 1 PLC ± -, 2 PLC ± -, 3 PLC ± .005(0.13), 4 PLC ± .005(0.13), ANGLES ± 0°30'.
 CUSTOMER DRAWING
 TIT: SHUEY 06-JAN-88
 CHK: A. EMADI 25-JAN-88
 APVD: A. EMADI 25-JAN-88
 Tyco Electronics Corporation Harrisburg, PA 17105-3608
 NAME: PLUG ASSEMBLY AMPLIMITE 36C4 SIZE 5, COAX MIX
 SIZE: A1
 CAGE CODE: 00779
 DRAWING NO: 208744
 RESTRICTED TO: -